

LAKE NONA TOWN CENTER PHASE I

6900 Tavistock Lakes Boulevard
Orlando, FL 32827

Lake Nona Town Center Phase I includes an 85,000 SF
office building with plaza-view restaurant space.



TAVISTOCK
DEVELOPMENT COMPANY

Tavistock Development Company
9801 Lake Nona Road
Orlando, FL 32827
TavistockDevelopment.com

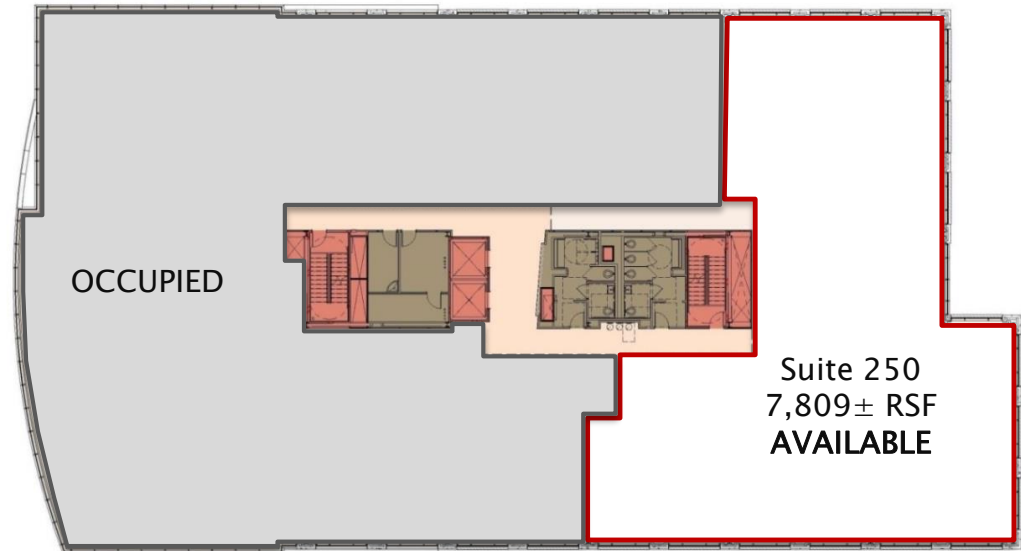
**OFFICE SPACE
AVAILABLE**

For more information, please contact:

GINGER VETTER
direct: 407.816.6686
cell: 407.619.5245
gvetter@tavistock.com

LAKE NONA TOWN CENTER

2ND FLOOR



1ST FLOOR



TAVISTOCK
DEVELOPMENT COMPANY

**OFFICE SPACE
AVAILABLE**

Tavistock Development Company
9801 Lake Nona Road
Orlando, FL 32827
TavistockDevelopment.com

For more information, please contact:

GINGER VETTER
direct: 407.816.6686
cell: 407.619.5245
gvetter@tavistock.com

LAKE NONA TOWN CENTER



PROJECT FEATURES:

- 85,000 SF, four-story, multi-tenant office building
- Class-A space with upgraded finishes throughout
- Office suites from 2,500 SF to 8,000 SF available
- Multiple plaza-view restaurant spaces available
- Beautifully landscaped plaza with outdoor seating, numerous restaurants and entertainment
- Adjacent to 200-room, dual-branded Residence Inn & Courtyard by Marriott
- Multi-level parking garage
- Easy access to SR 417, SR 528, Florida's Turnpike and Orlando International Airport
- Estimated occupancy 1st Quarter 2016

LAKE NONA TOWN CENTER IS CONVENIENTLY LOCATED NEAR

Nemours Children's Hospital
UCF College of Medicine
VA Medical Center
UF Research & Academic Center

GuideWell Innovation Center
Sanford-Burnham Medical Research Institute
USTA's National Campus
Restaurants

Laureate Park
Village Walk
Landon House (Urban-Style Apartments)
Watermark Apartments



TAVISTOCK
DEVELOPMENT COMPANY

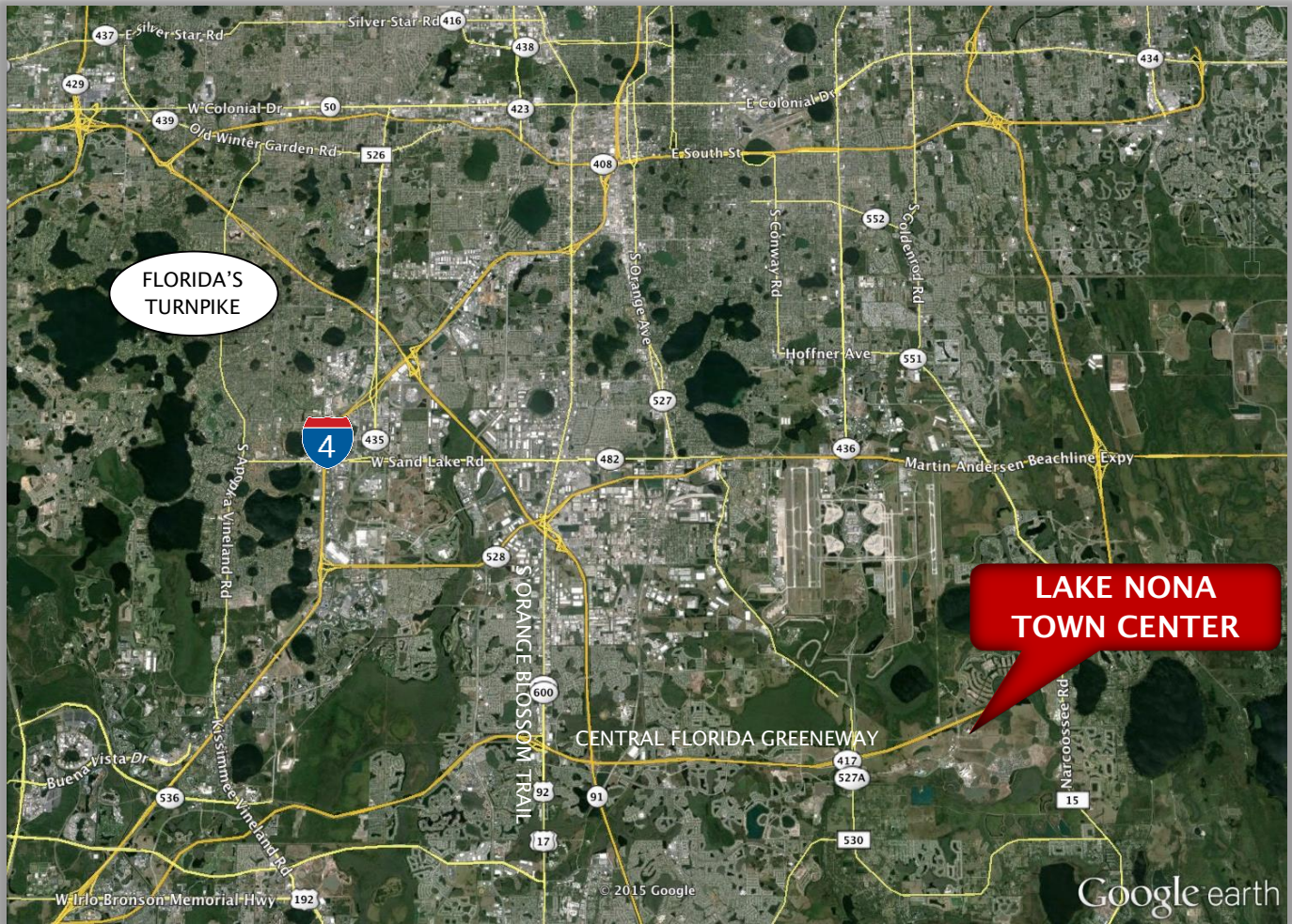
OFFICE SPACE AVAILABLE

Tavistock Development Company
9801 Lake Nona Road
Orlando, FL 32827
TavistockDevelopment.com

For more information, please contact:

GINGER VETTER
direct: 407.816.6686
cell: 407.619.5245
gvetter@tavistock.com

LAKE NONA TOWN CENTER



Demographics - 2014

Estimated Population	48,550
Estimated Number of Households	15,770
Estimated Average HH Income	\$74,510
Estimated Median Age	35

Lake Nona Town Center Phase I includes an 85,000 SF office building with plaza-view restaurant spaces.



TAVISTOCK
DEVELOPMENT COMPANY

Tavistock Development Company
9801 Lake Nona Road
Orlando, FL 32827
TavistockDevelopment.com

**OFFICE SPACE
AVAILABLE**

For more information, please contact:

GINGER VETTER
direct: 407.816.6686
cell: 407.619.5245
gvetter@tavistock.com